

IN THE FOOTSTEPS OF OUR "COUSINS" ...

ANCESTRY CHART

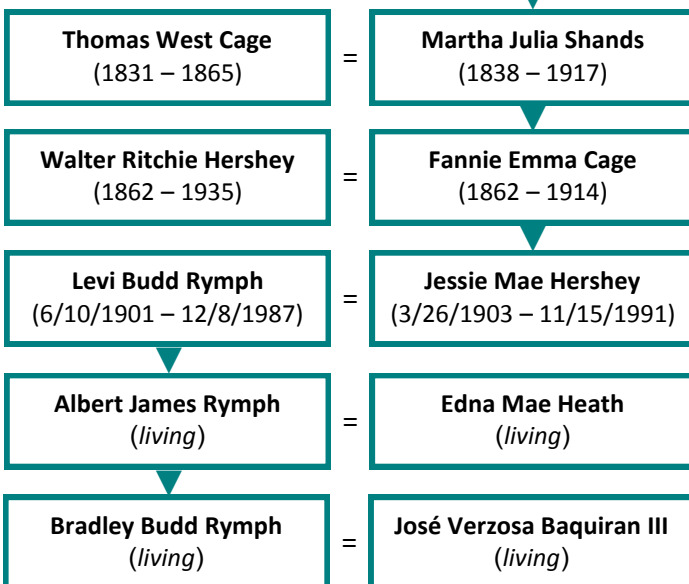
Civil War Officer and Soldier Cousins /

General Robert Edward Lee (CSA / 1807 – 1870) / Commander Sydney Smith Lee (CSA / 1802 – 1869) / Rear Admiral Samuel Philips Lee (USA / 1812 – 1897) / General George Washington Custis Lee (CSA / 1832 – 1913) / Cavalry General William Henry Fitzhugh Lee (CSA / 1837 – 1891) / Cavalry General Fitzhugh Lee (CSA / 1835 – 1905) / General Jubal Anderson Early (CSA / 1816 – 1894) / Captain Samuel Henry Early (CSA / 1813 – 1874) / Lieutenant John Cabell Early (CSA / 1848 – 1909) / Brigadier General Napoleon Bonaparte Buford (USA / 1807 – 1883) / Major General John Buford (USA / 1826 – 1863) / Brigadier General Abraham Buford (CSA / 1820 – 1884)

Confederate Army General **Robert E. Lee** (first row, left) and his brother Confederate Navy Commander **Sydney Smith Lee** (first row, center) — and their cousin Union Navy Rear Admiral **Samuel Philips Lee** (first row, right)— were my fourth cousins, seven times removed. Robert E.'s sons, Confederate General **George Washington Custis Lee** (second row,



(charts for "cousins" on following pages)



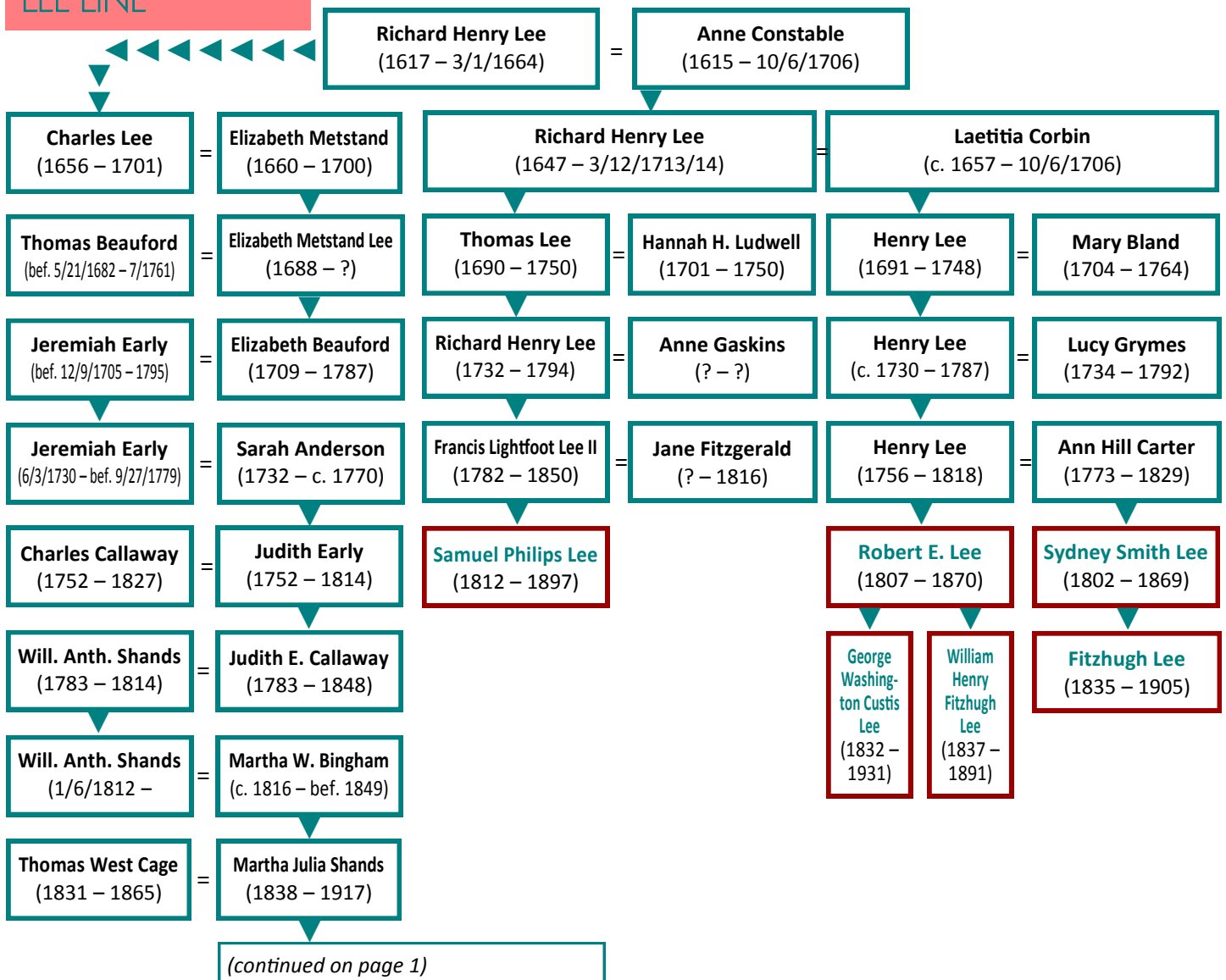
right) and Cavalry General **William Henry Fitzhugh Lee** (second row, center), and Sydney's son Confederate Cavalry General **Fitzhugh Lee** (second row, right) were my fifth cousins, six times removed.



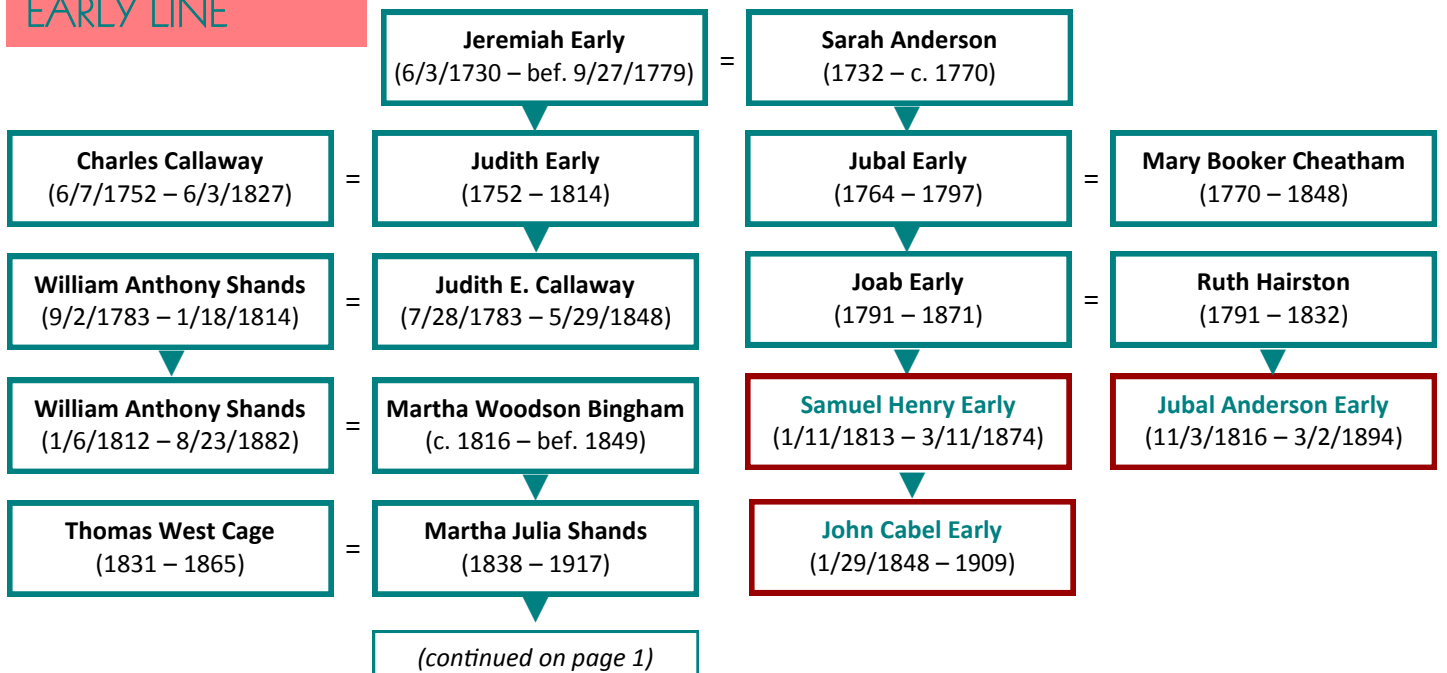
Brothers Confederate General **Jubal**



LEE LINE

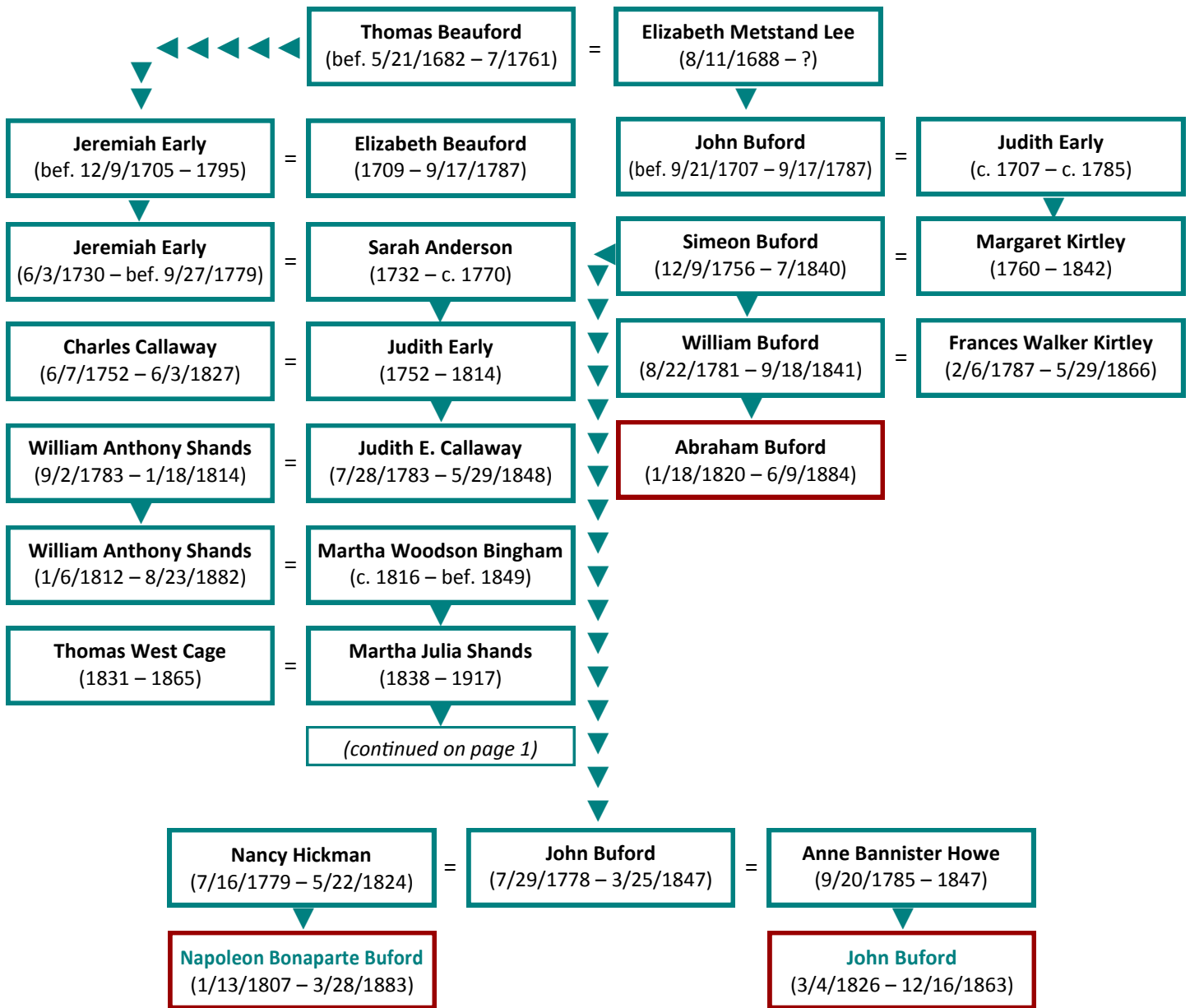


EARLY LINE



BUFORD LINE

(direct Buford and Lee lines)



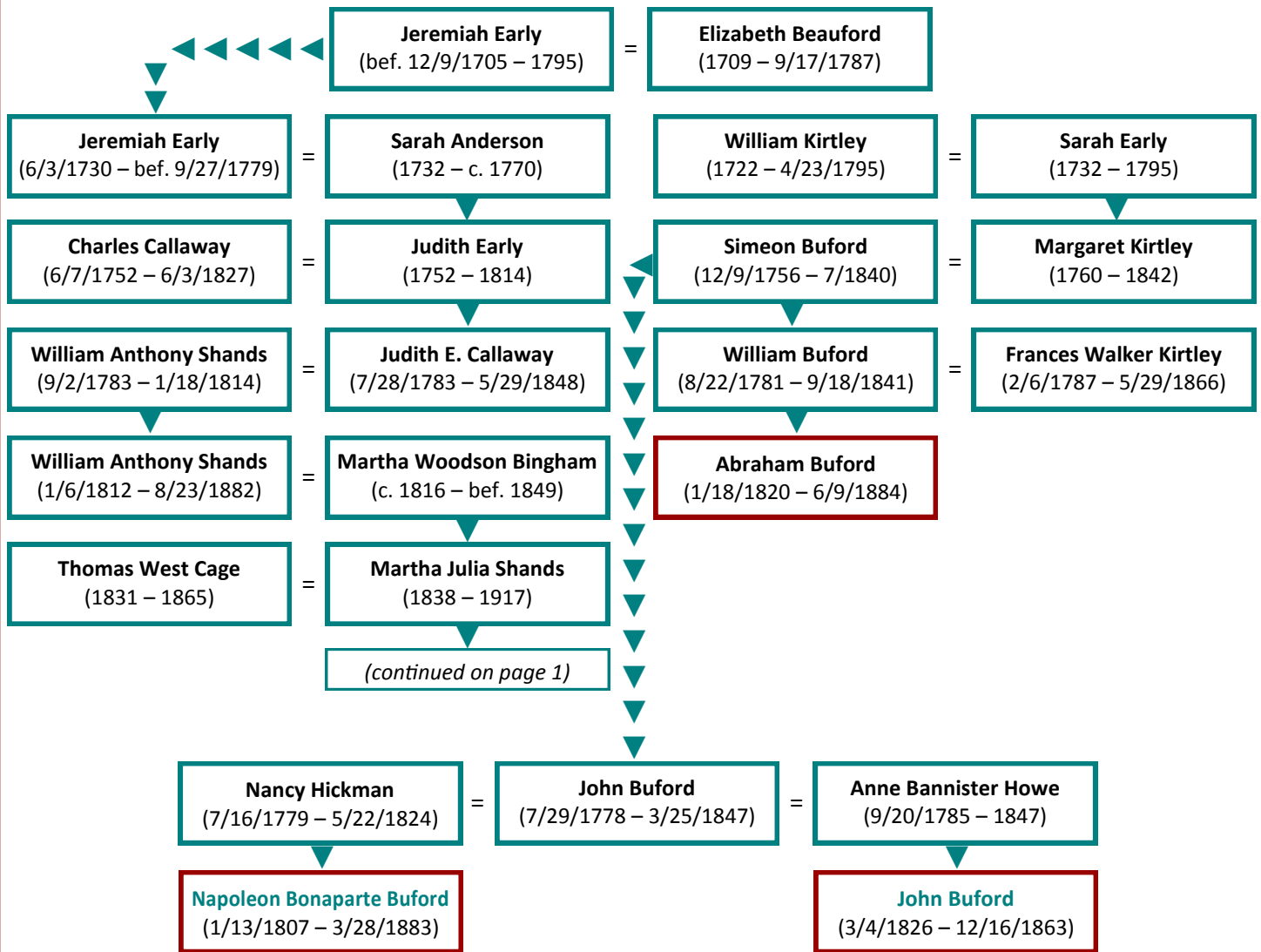
Anderson Early (page 1, third row, left) and Confederate Captain Samuel Henry Early (page 1, third row, top right) were my second cousins, five times removed. Samuel Henry's son, Confederate Lieutenant John Cabell Early (page 1, third row, bottom right), was my third cousin, four times removed.



Half-brothers Union Generals Napoleon Bonaparte Buford (right photos, left) and John Buford (right photos, right) and their cousin Confederate Brigadier General Abraham Buford (left) were my third cousins, five times removed.



BUFORD LINE (through Early lines)



All relations were through my father, Albert James Rymph, via his great-grandmother Martha Julia Shands, wife of Confederate Corporal **Thomas W. Cage**.

-- Bradley Rymph